

CERTIFICATE OF LOCATION OF GOVERNMENT CORNER

 EAST 1/4 Corner of Section 8 , Township 106 , Range 43 , 5th P.M.
 STATE OF MINNESOTA, County of Murray

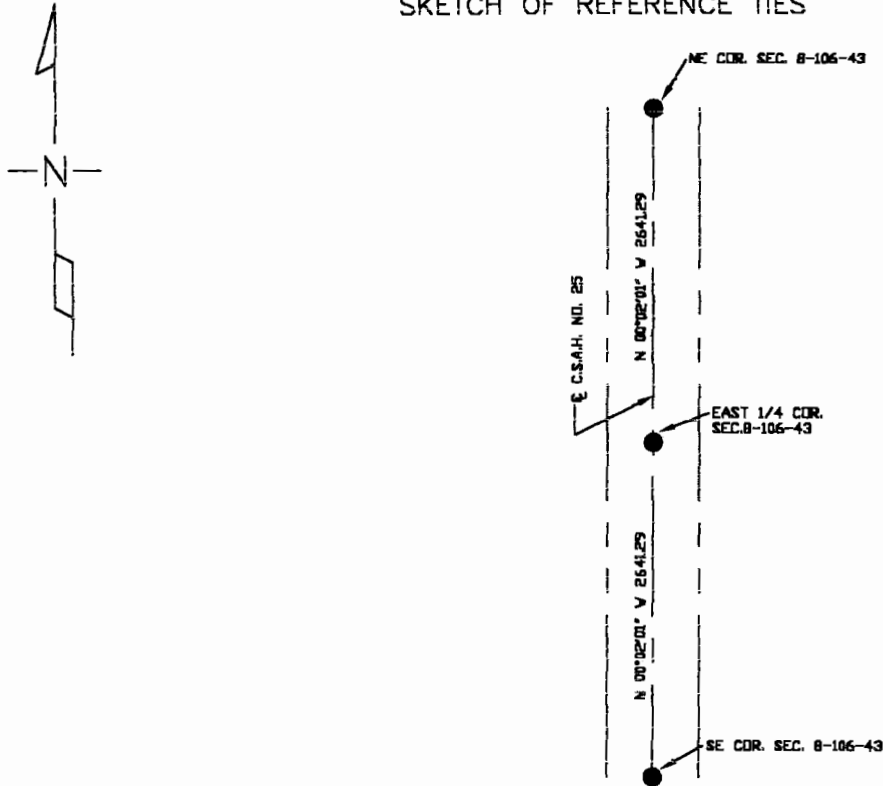
At the corner location shown on the sketch

On 12/14/98 found a Nothing

left monument as found
 lowered monument,
 removed monument (explain)

On 12/14/98 placed a 5/8" iron stake w/cap no. 23008 midway on line as per
 pls instructions

SKETCH OF REFERENCE TIES



Statement of evidence relative to this corner location is on back of page.

I hereby certify that this document and the data contained herein was prepared by me or under my direct supervision.

 Perry L. Zieba
 SIGNATURE

 9-20-00
 DATE

MN. REGISTRATION NO. 23008

Land Surveyor, Professional Engineer

County Surveyor, County Engineer

OFFICE OF THE COUNTY RECORDER

I hereby certify that this document was filed in the Co. Recorder's Office at _____ on the

_____ day of SEP 22 2000

County Recorder James V. Johnson
 By _____, Deputy

DOCUMENT NO. _____